

A place of learning,
laughter and friendship

www.thomasbuxton.towerhamlets.sch.uk



Parents and Carers say:

“Thomas Buxton Primary School is an excellent school. It provides breakfast club, clubs in the morning and after school, which is very good for our children’s learning. The school always keeps parents up to date with whatever is happening at school by text message.”

welcome

Welcome to Thomas Buxton Primary School

Thomas Buxton Primary School is a two-form entry community primary school with a nursery. It is maintained by the London Borough of Tower Hamlets and there are up to 460 pupils.

The school is right in the heart of Whitechapel’s vibrant, multicultural community. We take full advantage of the facilities and experiences locally and in central London to enrich children’s learning. The school is close to the green spaces of Allen Gardens and Weavers Fields, and is next door to Spitalfields City Farm. The school is also within walking distance of cultural centres; the Whitechapel Art Gallery, Bethnal Green Museum of Childhood and the Rich Mix Cinema and Arts complex – we are regular visitors to all.

Message from the Headteacher

My vision is that Thomas Buxton Primary School is a centre for excellence, serving our children, their families and the community as best we can, making sure they achieve and succeed.

Our school is a special place full of learning, laughter and friendship where everyone is happy, feels safe and is valued. We enjoy the present, but look to the future – and aspire to equip our children with the skills, curiosity and resilience they need to continue learning throughout their lives.

We are proud of our multi-cultural school. The children speak a wide range of different languages, and we respect and value everyone else’s cultures and ethnic backgrounds.

Our children deserve the best from this school. Our duty is to provide it.

Mrs Lorraine Flanagan
Headteacher



Message from the Chair of Governors

May I have the pleasure of welcoming you to Thomas Buxton Primary School. We are a school which prides itself in its multiculturalism, we are a multi-faith school and we offer an excellent education. Thomas Buxton School boasts close links with parents, pupils and the wider community. Governors are actively involved with all stakeholders in order to maintain excellence in teaching as well as celebrating achievements in the wider community. The school premises have recently undergone renovation and the outcome is visibly clear. Come and see for yourself.

Sajjad Miah
Chair Of Governors

Contact details:

**Thomas Buxton
Primary School**
Buxton Street
London E1 5AR

Tel: 020 7247 3816
Fax: 020 7247 3842

admin@thomasbuxton.
towerhamlets.sch.uk

www.thomasbuxton.
towerhamlets.sch.uk

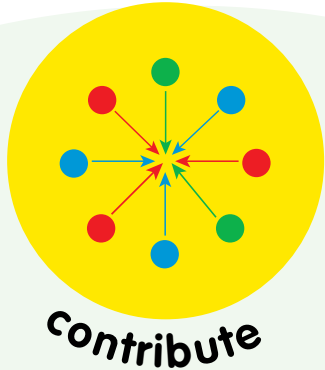
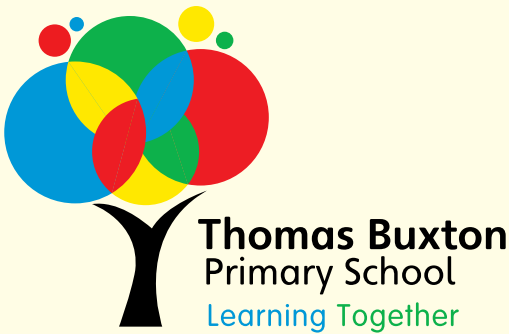


Our Vision and Values

Our School Vision

Thomas Buxton Primary School will work with everyone to create a **happy, safe** and **stimulating** setting where children are motivated to **learn together**. By maintaining high expectations of ourselves and each other, our children will be equipped to encounter **opportunities** and **challenges** with **resilience** and **determination**. We encourage a **curiosity** about the world and strive to ensure that our children will contribute **positively**, now and in the future.

"Teachers do the best they can to make us proud of ourselves"
Thomas Buxton pupil



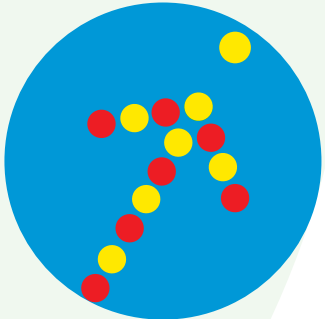
contribute



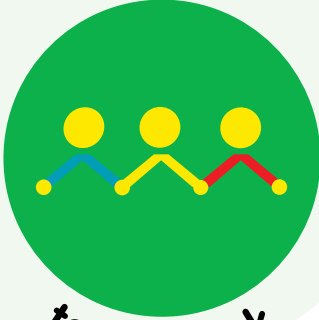
respect



enjoy



aspire



team work



enquire

Our School Values

CREATE

- Contribute** We can all make this an exciting place to learn, discover and create.
- Respect** Treat everyone in our school equally, in everything we say and do.
- Enjoy** Celebrate our love of learning and recognise effort and achievement.
- Aspire** Aim high to ensure that everyone fulfils their potential.
- Team Work** Our collaborative culture ensures children, families and staff work and learn together.
- Enquire** Ask questions, take risks, nurture curiosity and make discoveries.

"We respect each other and we are a caring, sharing school"
Thomas Buxton pupil





“At Thomas Buxton the children, parents and teachers work together so we can achieve our best.”

Thomas Buxton pupil

a learning environment

Thomas Buxton is a recently refurbished, single-storey school which reflects the high expectations of both children and staff. The facilities offer generous learning spaces both inside and outdoors.

Our three outdoor playgrounds are designed to suit specific age groups and are equipped with a wide range of appropriate play equipment to interest your child. There is a multi-use games zone with safety surface, and a football pitch and tennis court. We have an outdoor stage area with seating, different spaces for growing fruit and vegetables and other quiet areas. There is also a secret garden with a range of outdoor activity areas such as a fire pit, pond and den building. We are lucky that the school is surrounded by mature trees which give us shade in summer and a feeling of green all year round.

Our school

Early Years Foundation Stage: Nursery and Reception classes

For children aged 3 to 5, we have two nursery classes each with 25 places, both full and part-time. Our two reception classes have 30 places each.

Years 1 to 6:

There are two classes with a maximum of thirty places in each year group and they are organised in two key stages.

Key Stage One:		Key Stage Two:			
Year 1	ages 5-6	Year 3	ages 7-8	Year 5	ages 9-10
Year 2	ages 6-7	Year 4	ages 8-9	Year 6	ages 10-11



Admissions Policy

When your child is aged two, please put their name on the waiting list and fill in a nursery application form from the school office. If there is a nursery place for your child, we will send you a letter of confirmation and arrange a home visit with a member of the Foundation Stage team who will go through the admissions procedure.

Reception

You must make a separate application for a reception place on the Tower Hamlets Common Application Form, which will be posted to you by Tower Hamlets Pupil Services Team.

If there are more applications than places, the following criteria for acceptance will apply (from 2015/2016):

Children with a statement of special educational needs, which names the school applied to, will be placed before all other applicants. The remaining places will be filled in the following priority order:

- 1 Children looked after by the local authority including adopted children who were previously looked after and children who leave care under a special guardianship or residence order;
- 2 Children for whom it is deemed there is strong medical or social reason to attend the school applied to;
- 3 Children living within the catchment area who have a sibling attending the school (including the school of separate infants and junior schools) and who will continue to do so on the date of admission;
- 4 Children who live within the catchment area of the school;
- 5 Children living outside of the catchment area of the school applied to.

Years 1 to 6

If you have just moved to the area with children of school age, please contact Pupil Services at Tower Hamlets Pupil Admissions Team **020 7364 5006**.

All other admissions are coordinated centrally through that office, however parents and carers can state a preference for where their child is placed.

Contact Details:

Pupil Admissions Team
Mulberry Place
5 Clove Crescent
London E14 2BG
Tel: 020 7364 5006
Email: school.admissions@towerhamlets.gov.uk



**“The learning is fun –
and we are proud of
our achievements.”**
Thomas Buxton pupil

**what we
will teach
your
children**

Early Years Foundation Stage: Nursery and Reception classes

Nursery and Reception classes follow the statutory framework for the Early Years 2014. The focus is on developing children’s learning and independence. Learning and play are structured across the seven areas:

- Communication and Language
- Physical Development
- Personal, Social and Emotional Development
- Literacy
- Mathematics
- Understanding the World
- Expressive Arts and Design

Children have the opportunity to engage in indoor and outdoor learning which may be led by an adult or self-initiated. Sessions are planned around children’s interests and developmental stages.



Years 1 to 6

From Year 1 we follow the National Curriculum to ensure we meet statutory requirements for community schools. Teachers plan lessons to link both maths and literacy skills across all subject areas. Your child will learn:

Core Subjects	Foundation Subjects
English	Art & Design
Mathematics	Design & Technology (IDT)
Science	Geography
Computing	History
Religious Education (RE)	Modern Foreign Languages (Key Stage 2 only)
	Music
	Physical Education (PE)
	Personal, Social and Health Education (PSHE) and Citizenship



**“Pupils respond
well to praise
and to their
teachers’ high
expectations of
their behaviour.”**

Ofsted Primary
School Inspection,
June 2012

Throughout the school we aim to engage children by offering a wide range of practical activities and experiences to support formal learning. Educational visits take place to places of worship, museums, galleries and other places of interest that help children to put learning into a meaningful context.

Teaching

Our staff are dedicated to the school and aim to create a positive learning environment in which we build self-esteem but also have high expectations for achievement.

Lessons are structured in a variety of ways to provide a balance of investigative, independent and teacher-directed learning activities. Children learn in different ways and teachers make sure their needs are planned for in each lesson, sometimes they will work individually, or in pairs, small groups or as a whole class.



Assessment

In nursery and reception classes, we make careful observations of every child's learning and development which are recorded in special books and development is tracked against the Early Learning Goals.

From Year 1 through to Year 6 we use a range of assessment strategies to monitor progress and achievement.

In class, teachers work with pupils, giving them feedback verbally and through marking their work, so they understand how they are achieving and what they need to do next to improve. Children are also expected to monitor their own progress, and work towards individual and group targets – being given time to reflect and discuss their learning in each lesson.

Each term, teachers review the progress of all pupils through formal assessment, and gauge whether children are working at the expected level for their age in reading, writing and mathematics. Teachers meet with the leadership team to examine carefully every child's progress throughout the year.

Homework

We set homework weekly. This may be online homework or other tasks. This is an opportunity for parents to support their children with their learning. Parents are invited to attend workshops throughout the year to find out more about how to help their child. There is also a weekly homework club where children and their families can work together.

After school clubs

We encourage children to take part in extra-curricular activities before, during and after school. These include sports clubs, breakfast club, art, gardening, chess, cooking and farm clubs. Some children are also invited to take part in extra booster classes to support their learning.

Preparing for learning

We expect all children to arrive at school ready to learn. When children join reception or nursery classes, it will be the parent or carer who will organise the child for school. Gradually, however, it is important for the child to be shown how to take responsibility for being ready to learn.

Some things families can do to help prepare their children for school are:

- ✔ Make sure they go to bed at a sensible time on school nights
- ✔ Arrive at school on time
- ✔ Give them a healthy breakfast at home or bring them to the school's breakfast club
- ✔ Help with their homework
- ✔ Bring their book bag every day
- ✔ Read with the child every day or discuss their books with them
- ✔ Make sure they dress suitably every day.



"The children here are friendly and happy."

Thomas Buxton pupil

a nurturing environment

Working together with parents and carers

We believe in developing a successful partnership between home and school and encourage parents to be fully involved in the life of the school. Parents are invited into school three times a year to meet with teachers, and targets are set to help children move on in maths, reading, writing, and speaking and listening. There is a written progress and attainment report to parents in the spring term.

We hold an exciting range of classes, workshops and events for parents. Parents are encouraged to take an active role in their children's school life by:

- ✓ Joining us for assemblies and other celebrations throughout the year
- ✓ Regularly checking our website for details of the school calendar and events at www.thomasbuxton.towerhamlets.sch.uk
- ✓ Reading the weekly newsletter which goes home every Friday
- ✓ Supporting the school rules and reinforcing our high expectations of behaviour.



Special needs

Every child is unique and individual. They learn at different rates and reach milestones at different times, and this process continues throughout lifelong learning. In every class there will be children who may at some time have special educational needs (SEN). These learning difficulties could be short or long term.

At Thomas Buxton, we work in partnership with parents to monitor all our pupils' development and, where there are concerns, take steps to help them to learn more effectively. We do this through identifying any special educational needs and drawing up an Individual Education Plan (IEP). The IEP helps us target areas of difficulty, identify the steps needed to support learning and ensure the right level of help.

We have a team of trained teaching assistants who provide additional help, both one-to-one and in small groups. All our teachers are trained to support children with special educational needs, although the school may at times seek specialist advice from other people with relevant expertise e.g. speech therapist, educational psychologist, school nurse.

School meals

Our meals team cook hot food in our own kitchen and provide a varied menu with a range of healthy choices. Children may also bring in a packed lunch of cold food. If you think you may be entitled to claim for Pupil Premium, please enquire at the school office.



Breakfast club

It is important that children come to school ready to learn. We have a breakfast club which is open from 8.00 am each morning. Children can choose from a range of foods from cereals and toast with omelette, sausage and beans. They can also take part in a range of activities to start to the day in a positive way.

Playtime

Playtime is a key part of children's experience and our playground areas are designed to suit different age groups. There is opportunity for children to take part in activities or to just play with friends. Staff are trained to support children's activities in the playground and to keep them safe.

"Thomas Buxton is simply the best."

Thomas Buxton parent



Assemblies

Assemblies are a special time for everyone, when we

- Share, celebrate and reflect upon the issues and values important to the school
- Recognise and reward effort and achievement
- Learn about, respect and share important religious and cultural festivals from different faiths
- Consider, wonder and reflect upon moral and world issues
- Bring the school and community together

Behaviour

We expect high standards of behaviour because a calm environment allows children to enjoy their learning and maximise their potential. We manage behaviour across the school using consistent strategies and messages.

We explain clearly what we expect from our pupils, and are delighted to acknowledge and reward good behaviour by either awarding reward stickers, presenting certificates, or giving children responsibilities around the school, which might include being monitors, tour guides, selected for Top Table or reading with younger pupils.

If pupils are not reaching our expectations, we will always explain what they have done and give them an opportunity to reflect and change their behaviour by making better choices.



Bullying

Our anti-bullying culture is high profile and we take it very seriously. We reinforce the message through activities such as anti-bullying weeks, assemblies, clubs and Personal, Social and Health Education lessons.

Children are encouraged to build respectful, positive relationships with one another, and taught strategies to resolve things if they think they have a problem. We deal immediately with any issues of bullying that may arise.

Attendance

Good attendance and punctuality are vital if pupils are to maximise their learning and make the best progress. It is important to work in partnership with parents to make sure their child gets the most out of their education and we expect notification of illness or absence in the morning, and medical appointments to be made out of school hours.

School Council

Thomas Buxton pupils enjoy playing a key role in making decisions about school life. We are proud of our School Council whose representatives are elected by each class, and are encouraged to discuss matters of importance with their classmates before council meetings. The School Council is also linked with the Pupil Parliament held with other local schools, and we contribute to an action plan for dealing with local issues affecting local children and the community.



School Governors

Governors are appointed to make decisions about how the school is run. They help decide what is taught, appoint staff, set standards of behaviour and monitor standards of achievement. Some governors are parents or members of staff or a Local Authority appointed Governor. They meet once a term as a full governing body and sit on a number of committees. To be a Parent Governor you must have a child in the school, be elected by parents and you may serve for four years, as with other governors. Parent Governors bring a parent's view to the governing body, acting as individuals, not as delegates of the parents. .

Partnerships

Thomas Buxton Primary School benefits from close links with a number of companies organised through the Tower Hamlets Business Partnerships. Staff from these companies work with children each week as reading or number partners.

We are also fortunate to be part of the e1 Partnership, which is a group of schools working together to provide opportunities for children and families across our community.

the wider environment



**"Thomas Buxton Primary
School is simply the best."**

Thomas Buxton pupil



Thomas Buxton Primary School

Buxton Street, London E1 5AR

Tel: 020 7247 3816 Fax: 020 7247 3842

admin@thomasbuxton.towerhamlets.sch.uk

www.thomasbuxton.towerhamlets.sch.uk